

Astucciatrici orizzontali e verticali a movimento alternato e continuo
Automatic intermittent and continuous motion horizontal and vertical cartoners

BOX 80 V

Fino a 3.600 pezzi/ora
Up to 3.600 units/hour



BOX 80 V



Le descrizioni e fotografie di questo catalogo sono indicative e possono essere modificate senza alcun preavviso.

Descriptions and pictures of this brochure are given for information only and can be modified without prior notice.

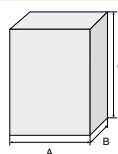
Les descriptions et illustration sont indicatives et peuvent être modifié sans préavis.

Las descripciones del presente catalogo son solo indicativas y pueden ser modificade sin noticia.

Beschreibungen und Abbildungen in diesem Katalog sind unverbindlich und können ohne vorherige Anzeige geändert werden.

DIMENSIONI ASTUCCI

Carton dimensions - Dimensions étuis
Schachtelabmessung - Dimensiones del estuche



	A	B	C	A+B
mm	20±120	20±80	50±250	200

Potenza installata

Power - Puissance installé

Inst. Leistung - Potencia installada

kW

6 - 11

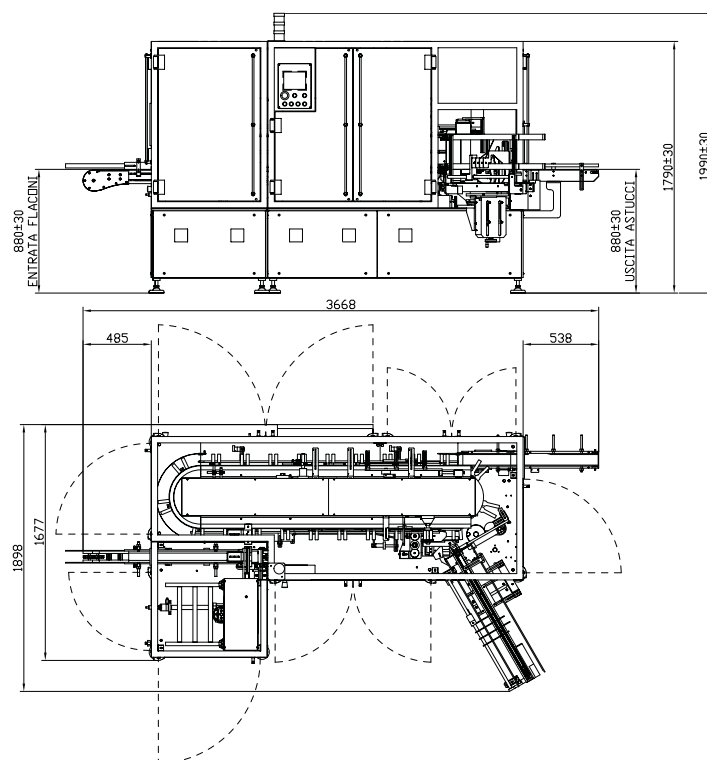
Pezzi/ora Fino a **3.600**

Units/hour Up to **3.600**

Pièces/heure Jusqu'à **3.600**

Stück/h Bis zu **3.600**

Pz/hora Hasta **3.600**



CONSUMI

Consumption - Absorption
Verbräuche - Consumos

Aria

Air - Air

Luft - Aire

l/min

600